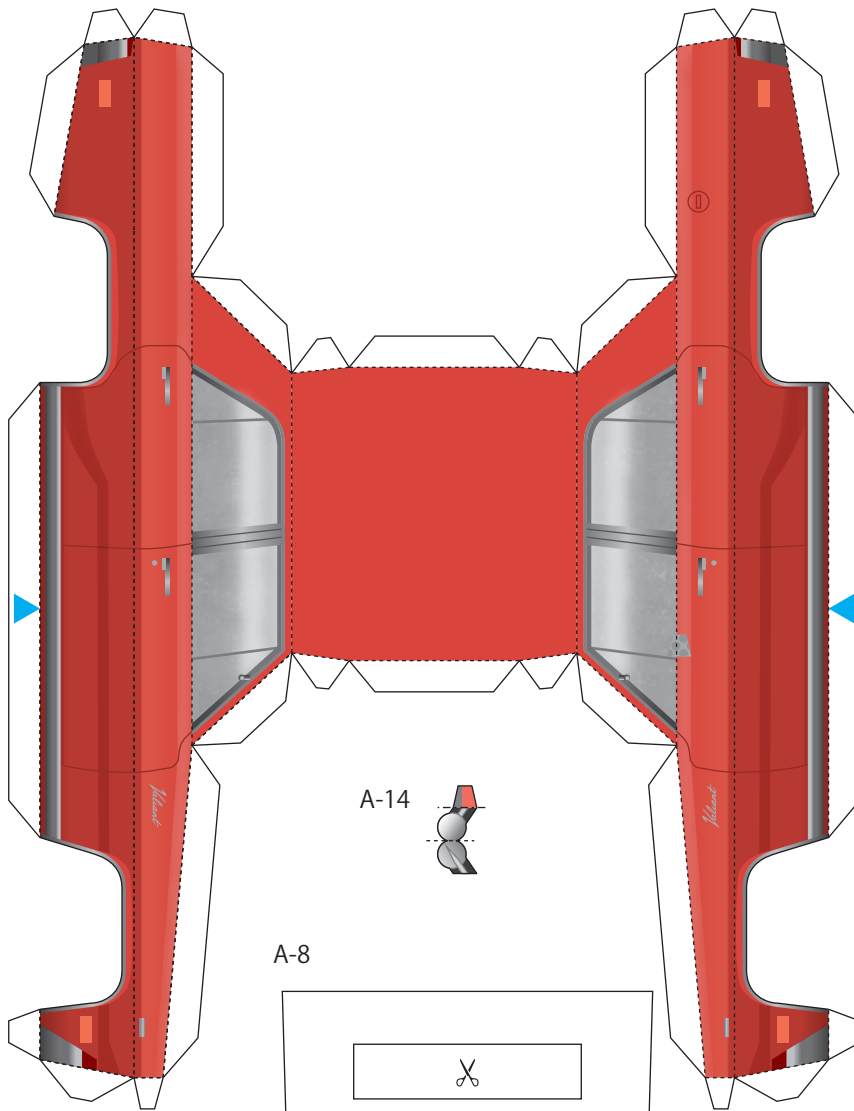


# クライスラー『プリムス・ヴァリアント(Plymouth Valiant)』1/32スケール

Chrysler "Plymouth Valiant" 1/32 scale

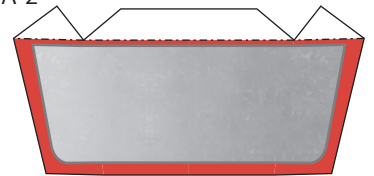
A-1



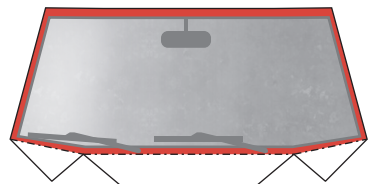
A-5



A-2



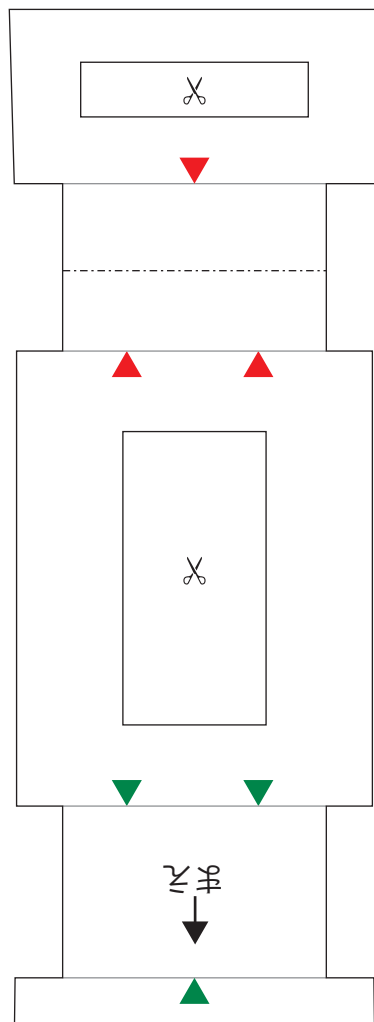
A-3



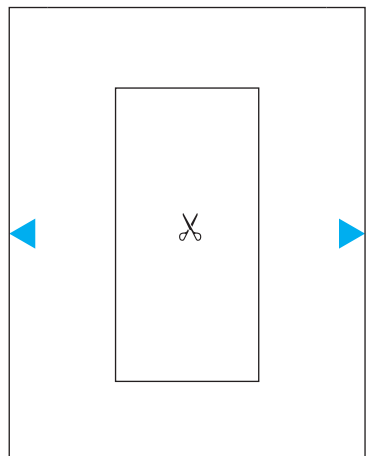
A-4



A-8



A-6

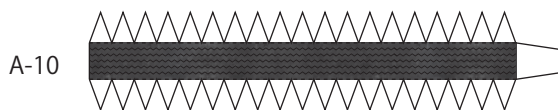
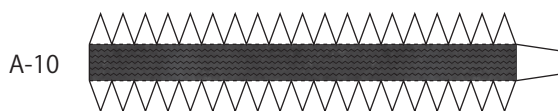
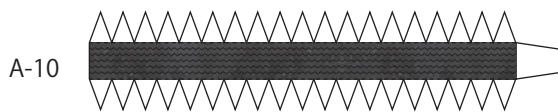
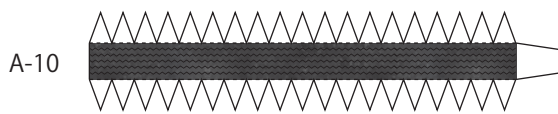
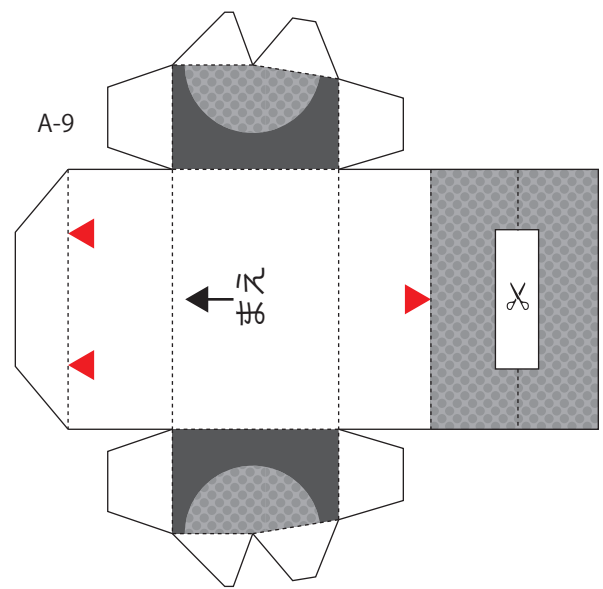
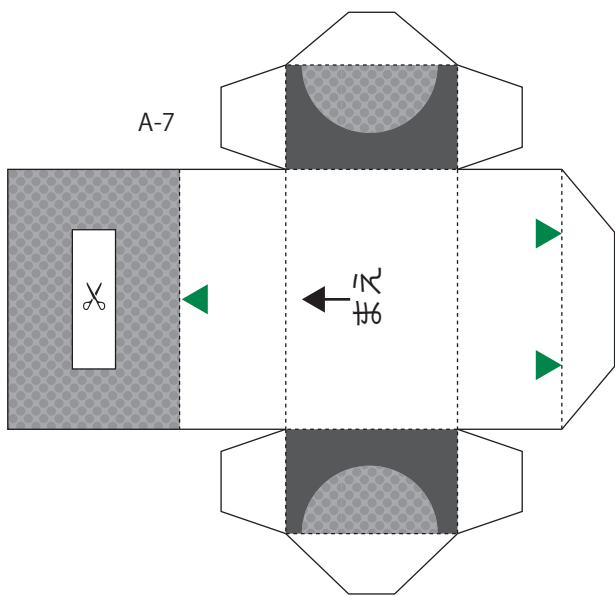


## 記号の見方

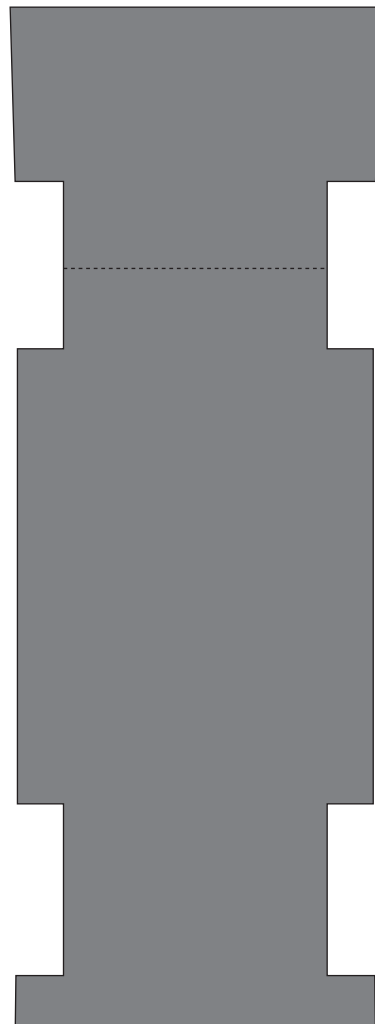
- ..... 山折り 線の部分がでっぱるように折ります。
- - - - - 谷折り 線の部分がへこむように折ります。
- ✂ 切り抜き 周囲の実線を切り抜きます。
- ← まえ 前方向 車両の前方を示します。
- 接着位置 パーツを接着する位置を示します。
- ▲ 位置合せ 同じ色の▲の場所に接着します。

## How to read the symbols

- ..... Mountain fold Fold your paper into a mountain shape.
- - - - - Valley fold Fold your paper into a valley shape.
- ✂ Cut out Cut out the solid line around.
- ← まえ Bow direction Indicates the front of the vehicle.
- Where to glue Where to glue the parts.
- ▲ Guide for alignment Glue to triangles of the same color.



A-13



プリンターの設定は「縁無し印刷」を推奨します。  
We recommend "Borderless printing" for the printer settings.

The explanation of the assembly method is available on the paper craft website "Paper Model Studio" (<https://papermodel.jp/peterbilt281-index.html>).