



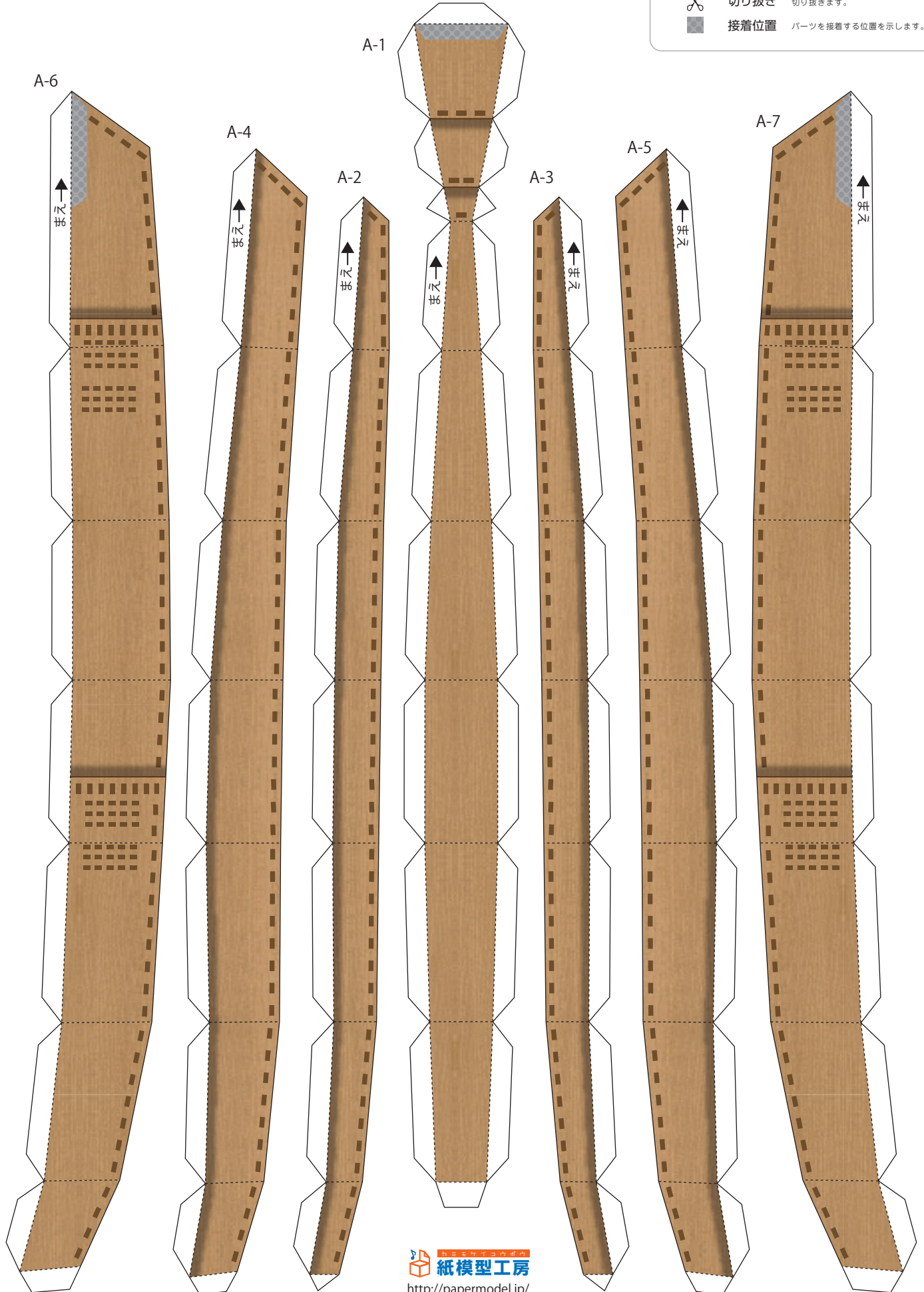
織田信長  
鉄甲船

あ た け ま る  
阿武丸

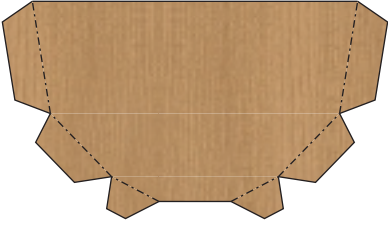
1/150

記号の見方

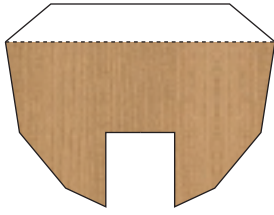
- ..... 山折り 線の部分がでっぱるように折ります。
- 谷折り 線の部分がへこむように折ります。
- ←まえ 前方向 船の前方を示します。
- ✂ 切り抜き 切り抜きます。
- 接着位置 パーツを接着する位置を示します。



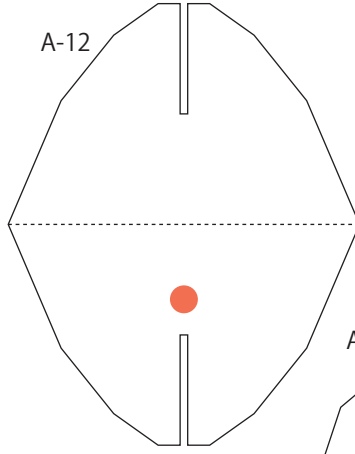
A-8



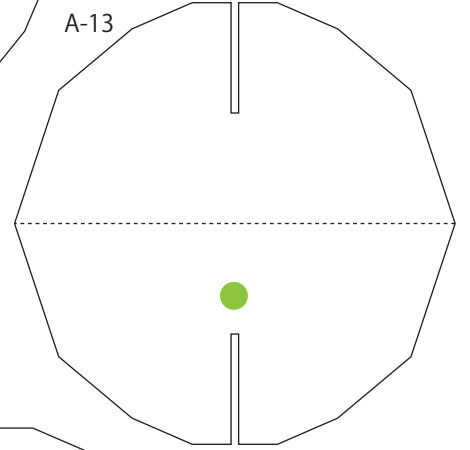
A-9



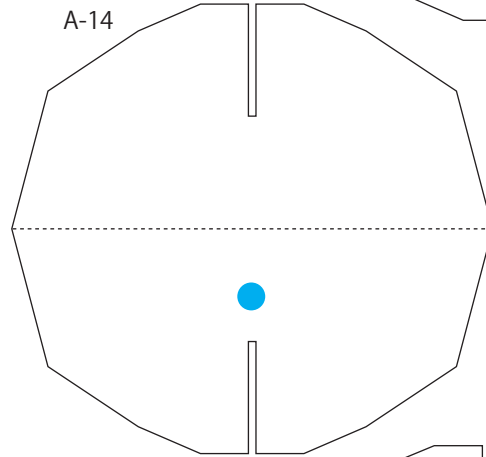
A-12



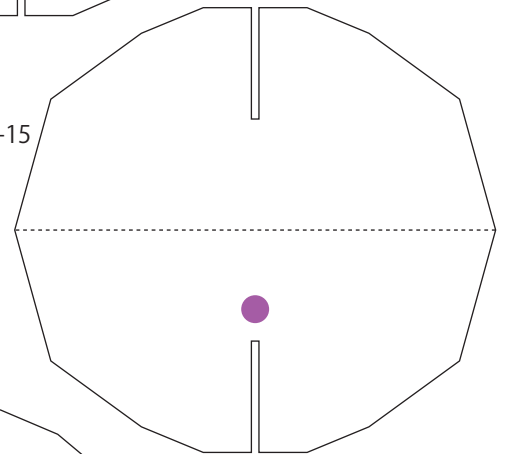
A-13



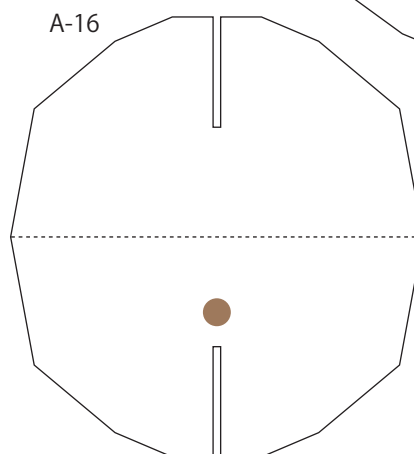
A-14



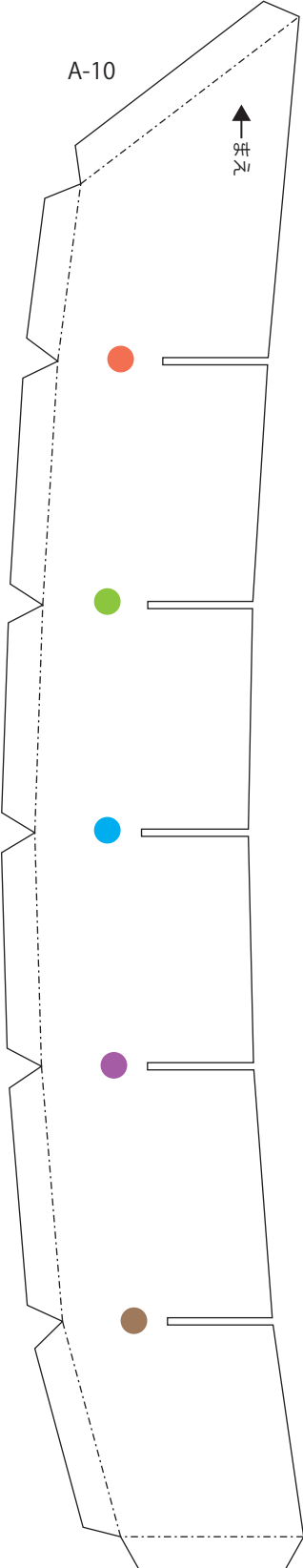
A-15



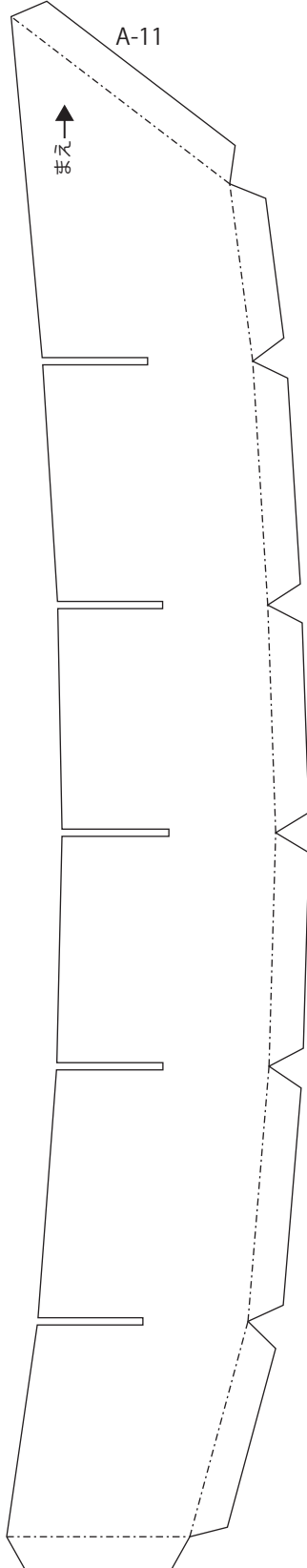
A-16



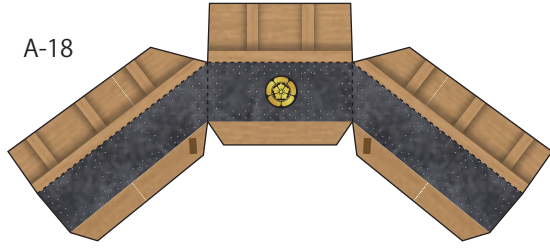
A-10



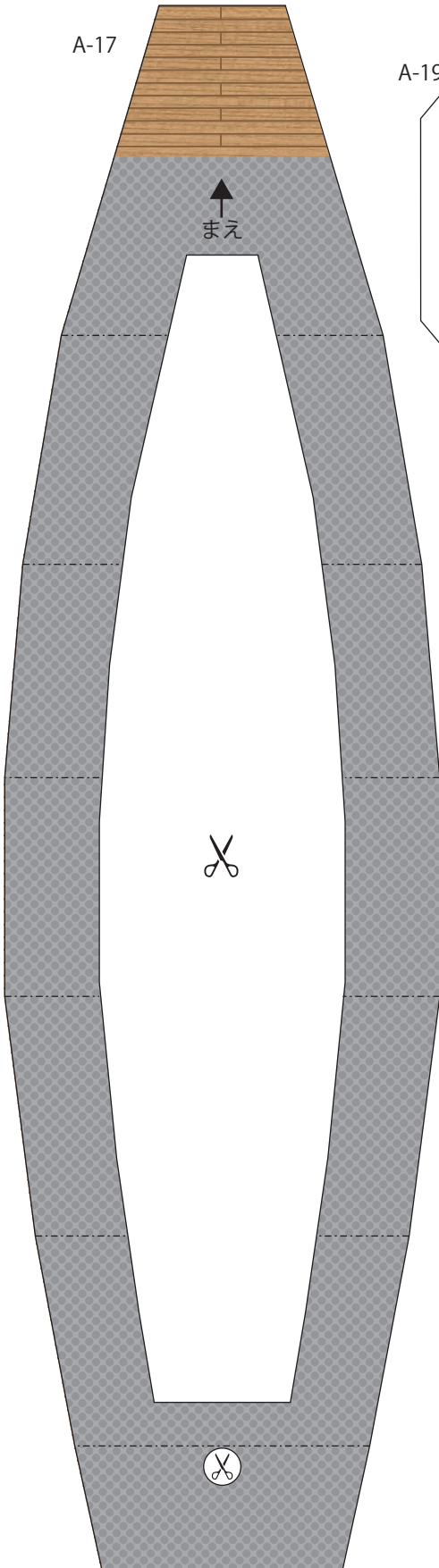
A-11



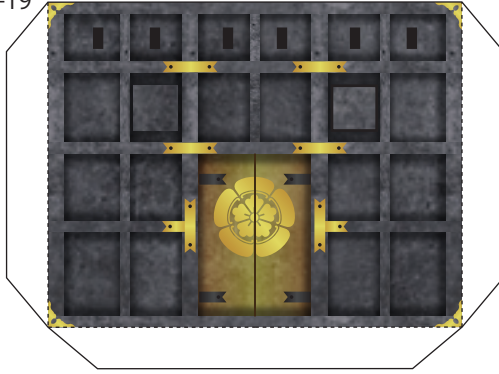
A-18



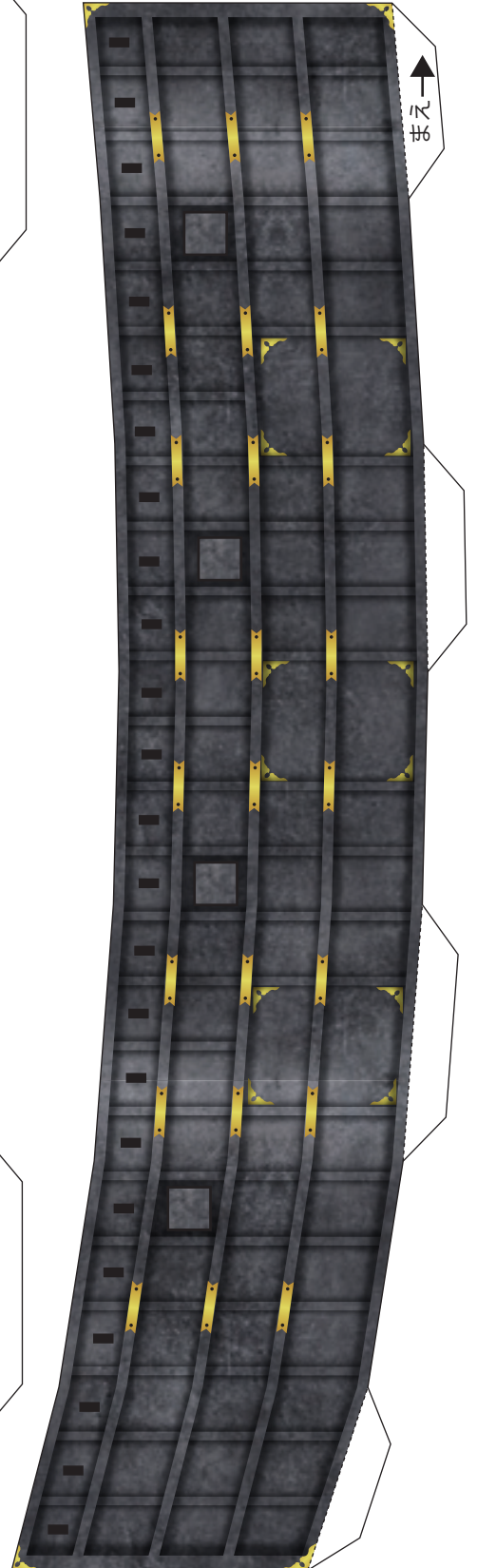
A-17



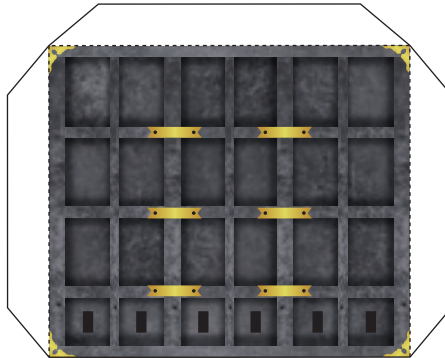
A-19



A-22

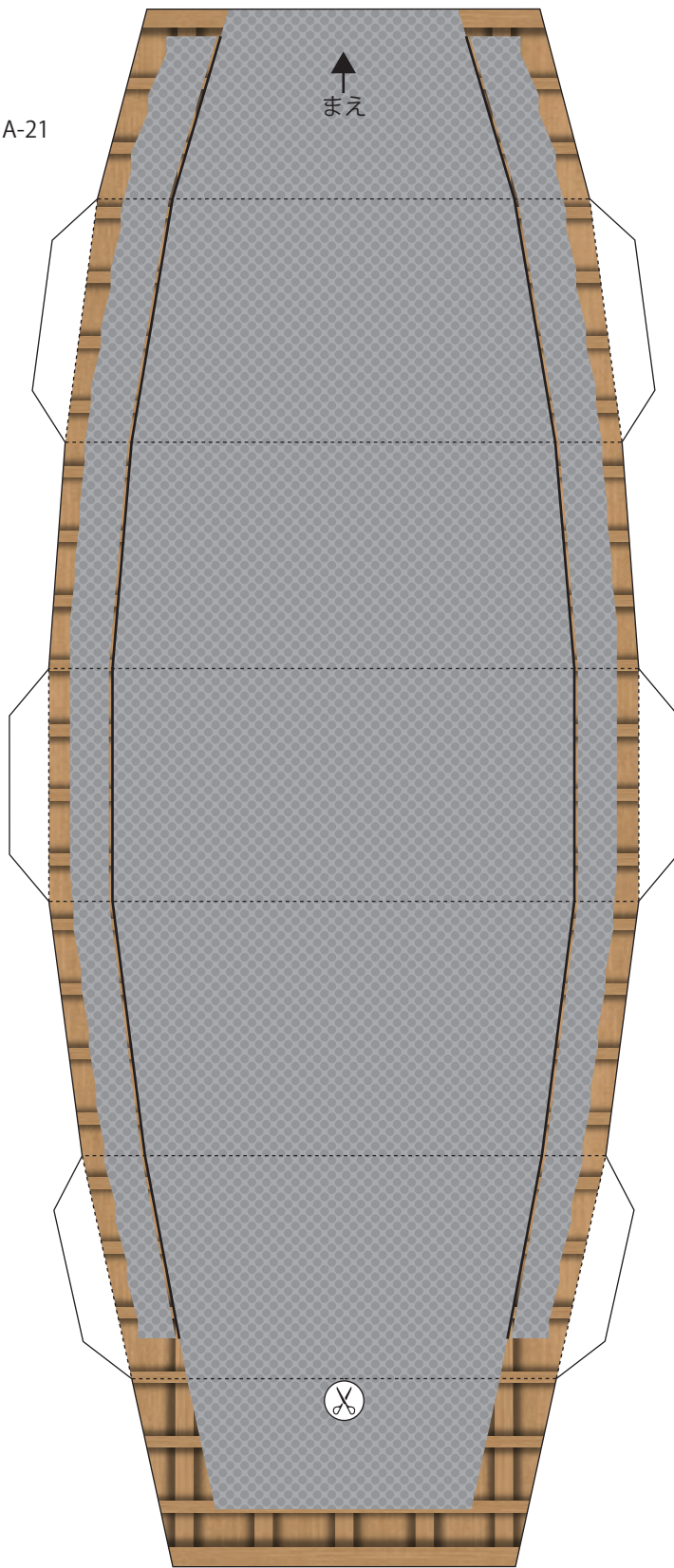


A-20

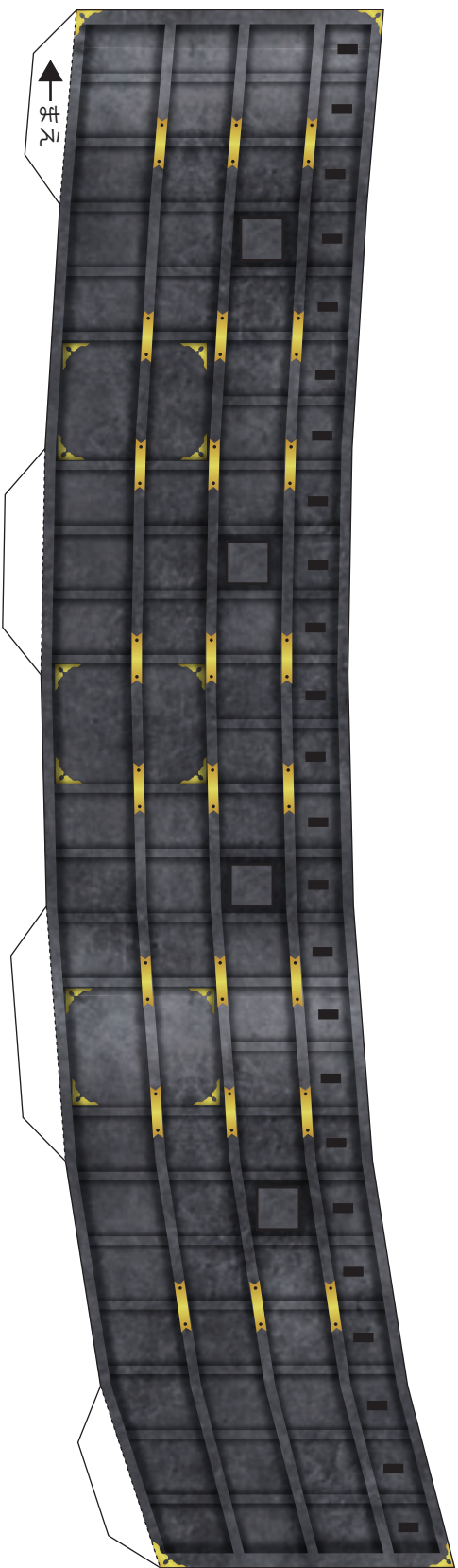




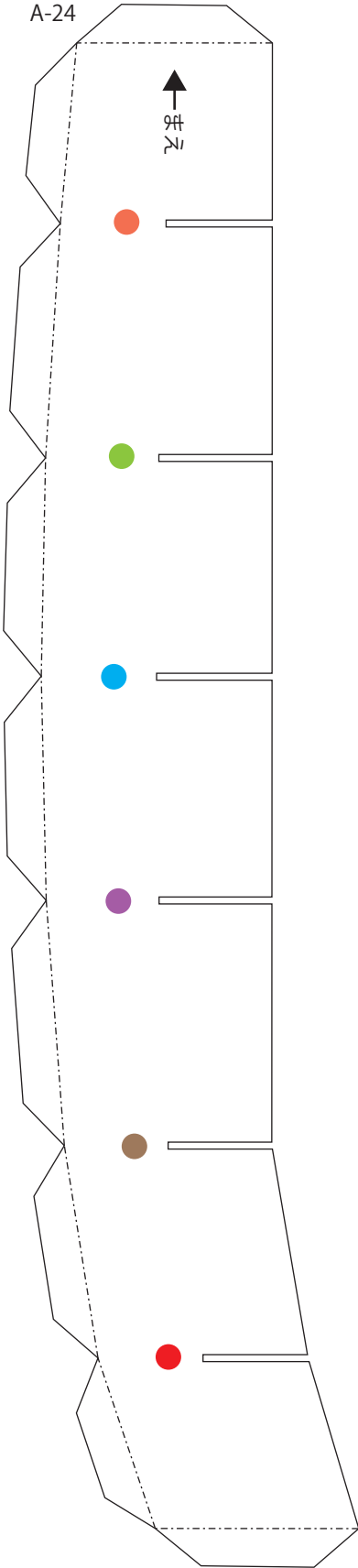
A-21



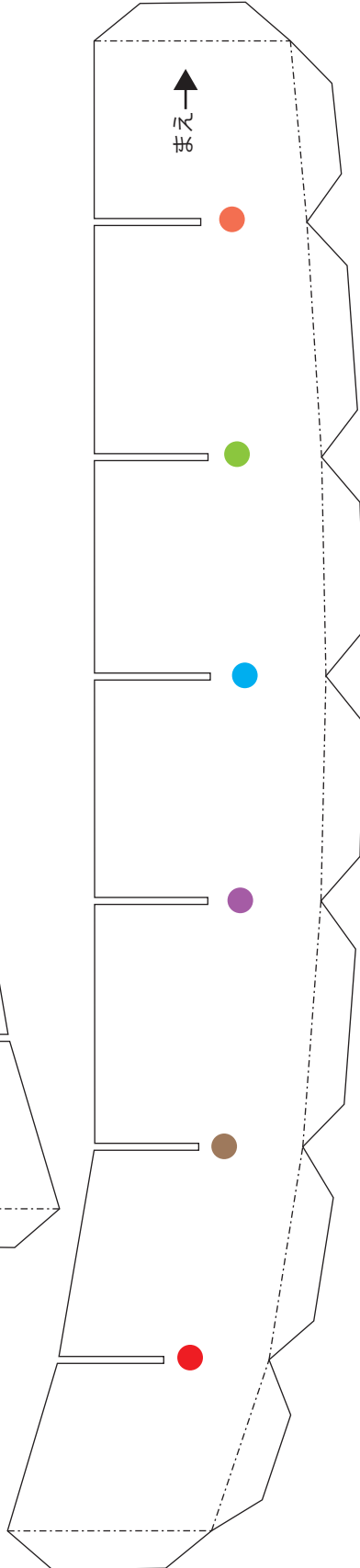
A-23



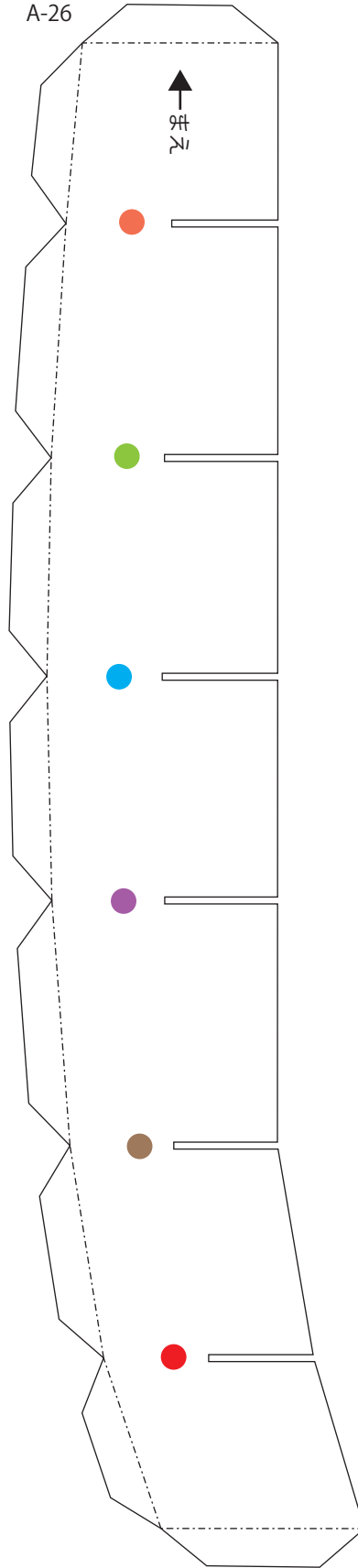
A-24



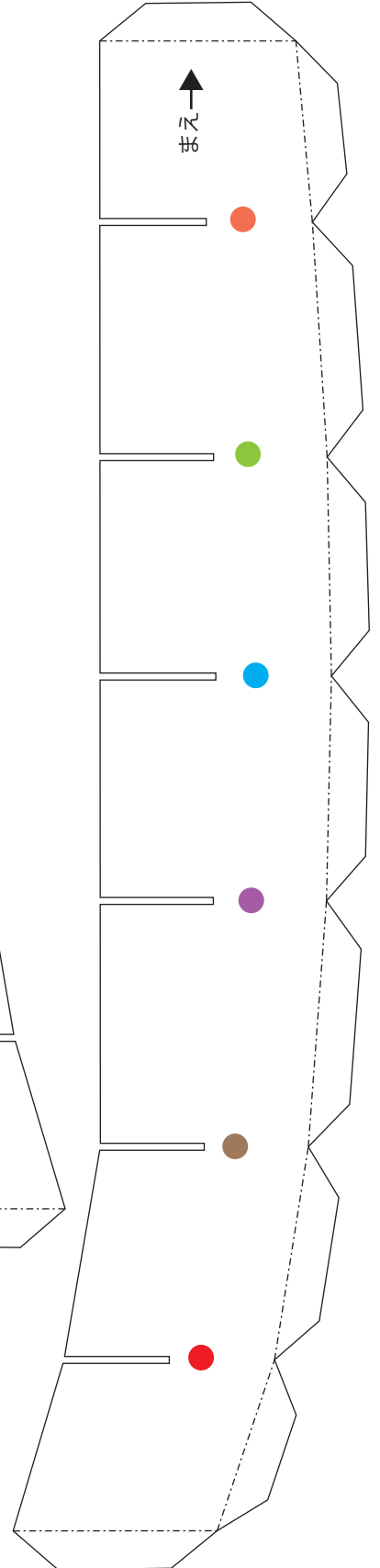
A-25



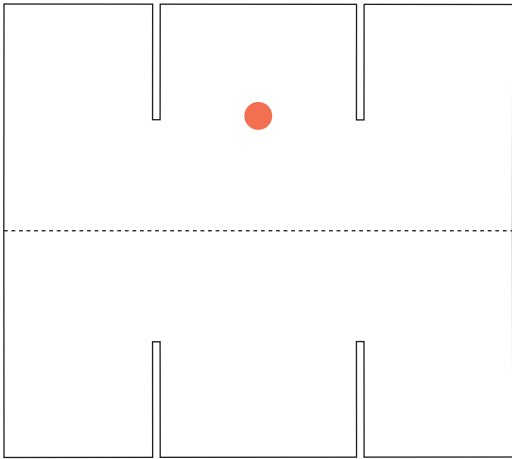
A-26



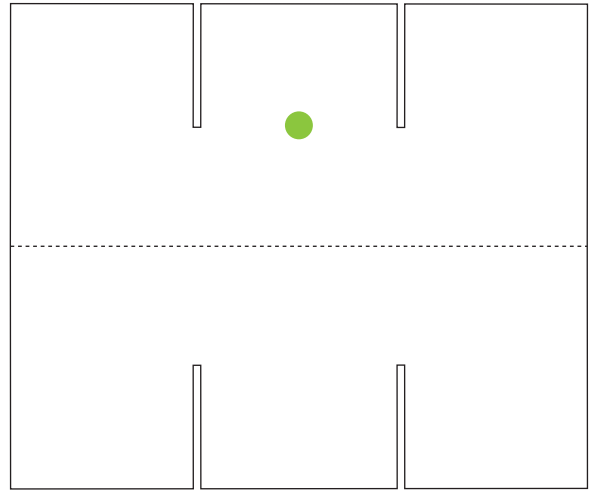
A-27



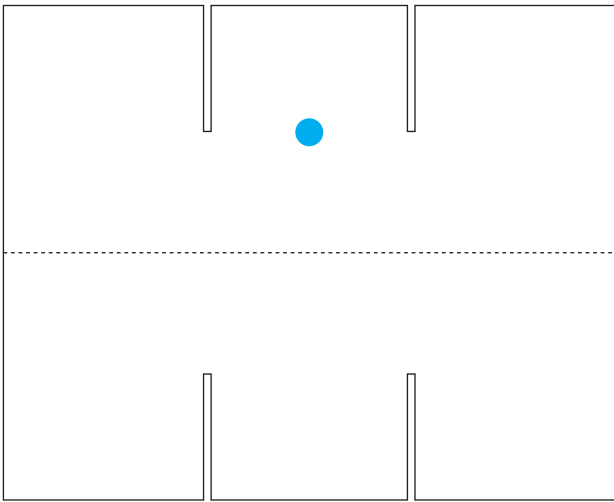
A-28



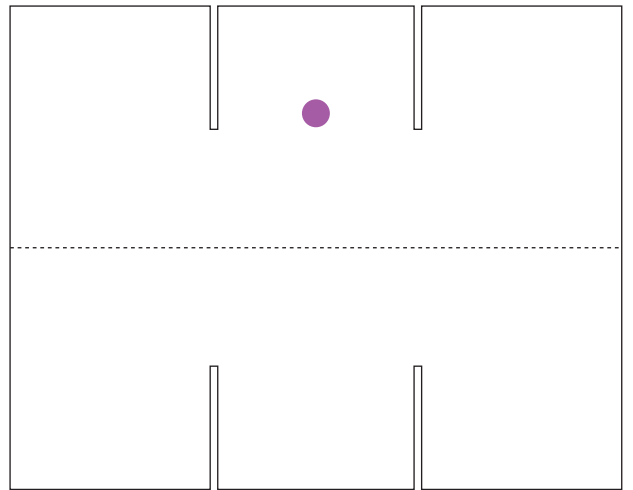
A-29



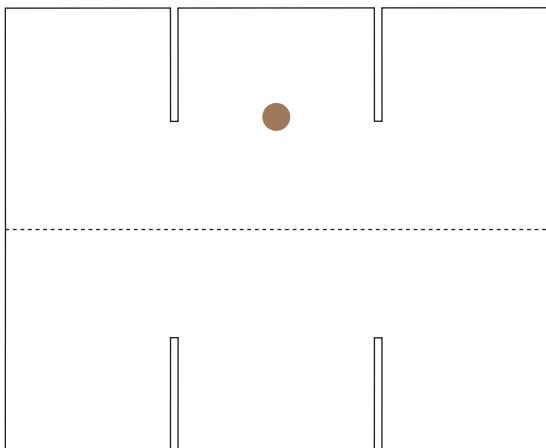
A-30



A-31



A-32



A-33

