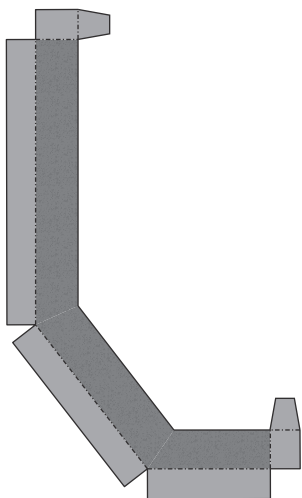


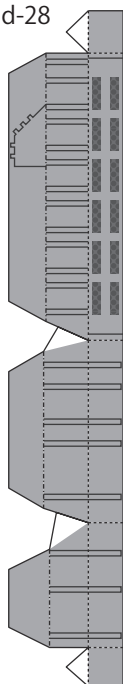


修正用のパーツです。
This is the parts for correcting mistakes.

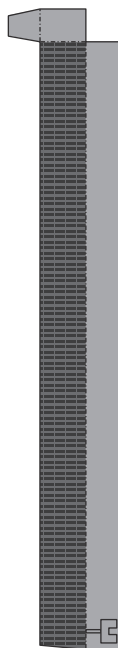
d-29



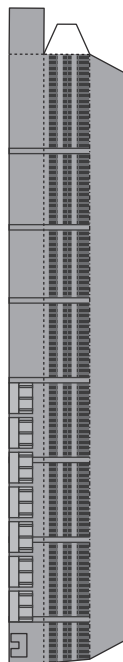
d-28



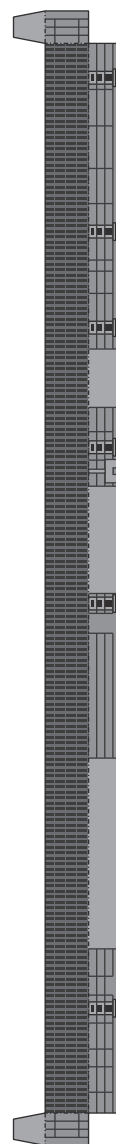
d-34



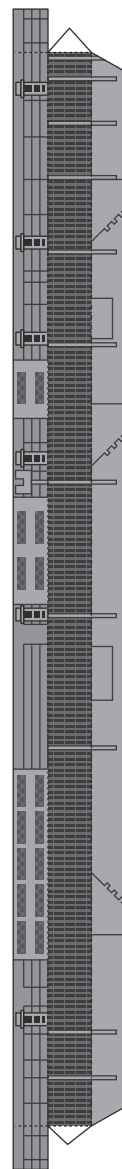
d-32



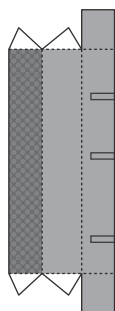
d-37



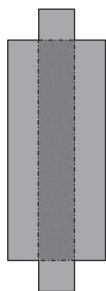
d-36



d-30



d-31



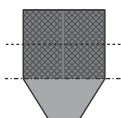
d-35



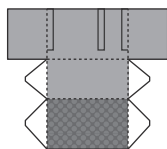
d-33



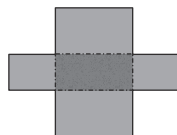
d-38



d-39



d-40



The explanation of the assembly method is available on the paper craft website "Paper Model Studio" (<https://papermodel.jp/cvn78-index.html>).

We recommend "Borderless printing" for the printer settings.