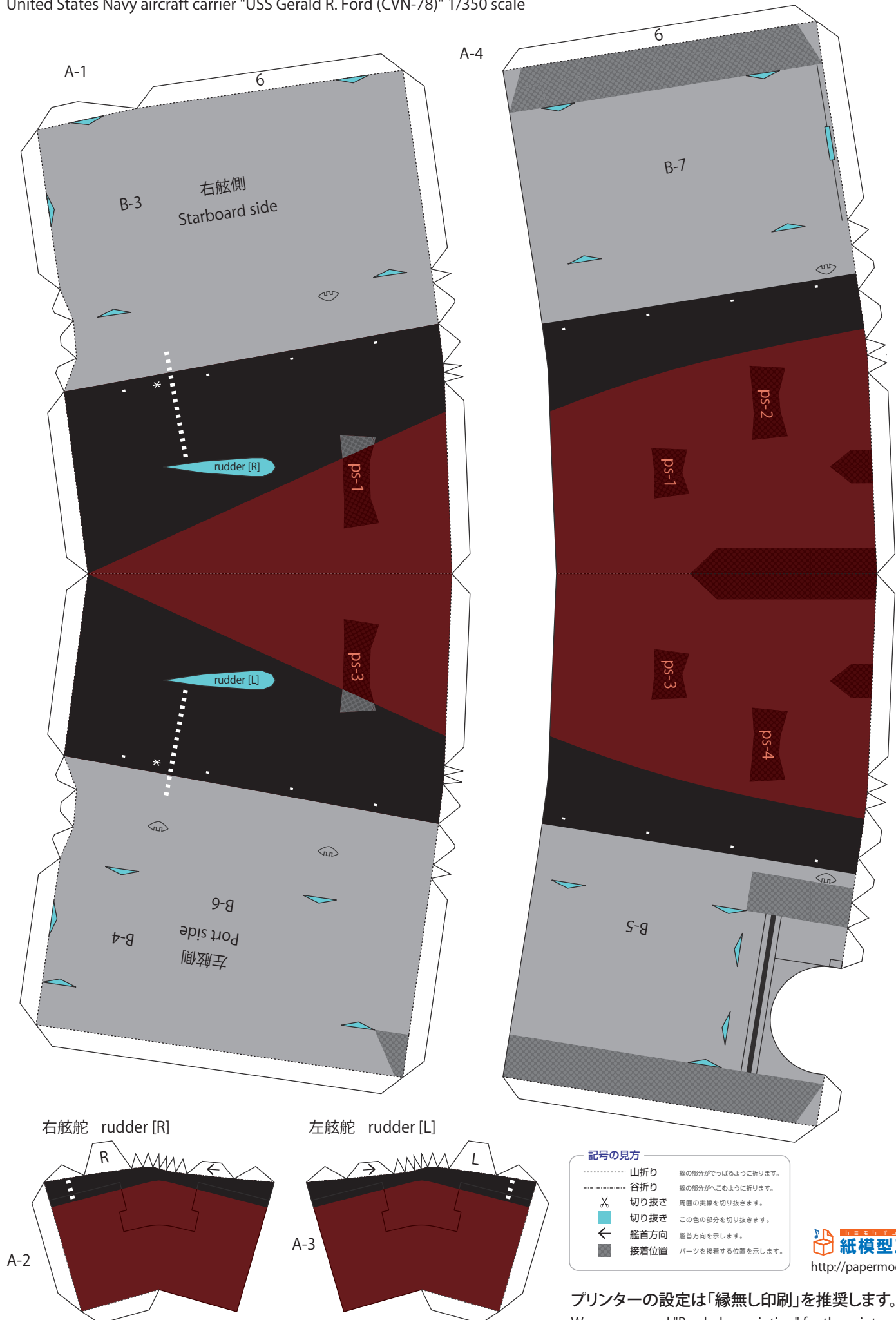
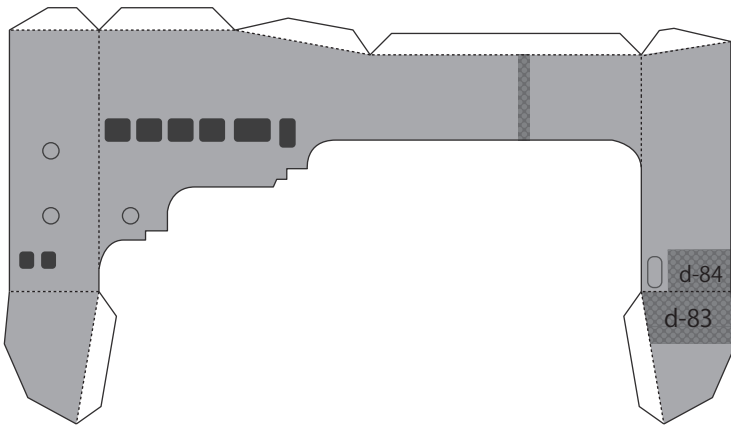


アメリカ合衆国海軍 空母『USS ジェラルド・R・フォード(CVN-78)』1/350スケール

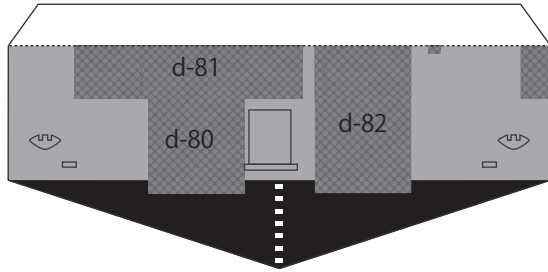
United States Navy aircraft carrier "USS Gerald R. Ford (CVN-78)" 1/350 scale



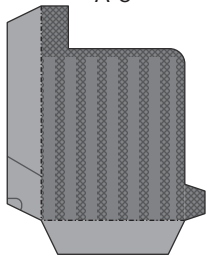
A-5



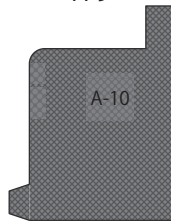
A-6



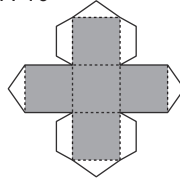
A-8



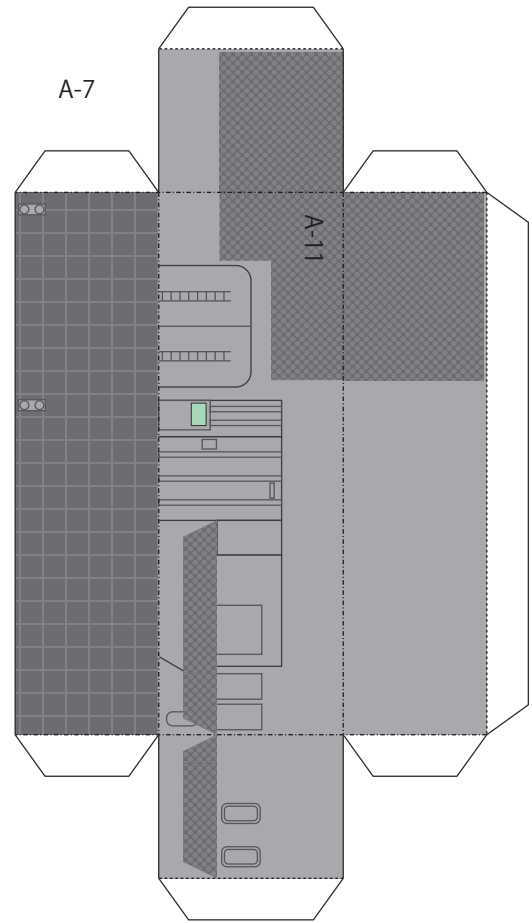
A-9



A-10



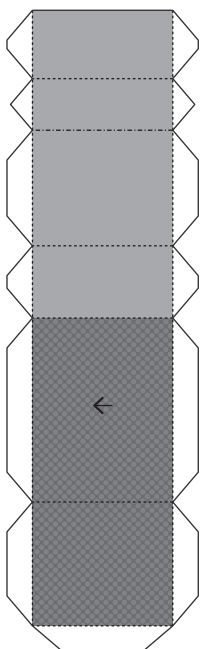
A-7



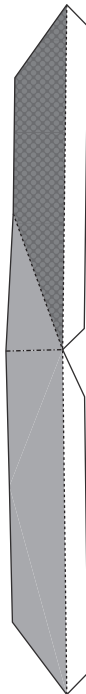
Please be careful!

This paper model can be obtained free of charge from the paper craft website "Paper Model Studio" (<https://papermodel.jp/otona.html>). It is sold for a fee from some mail-order sites, but it was done without permission. Please note that it has nothing to do with this site.

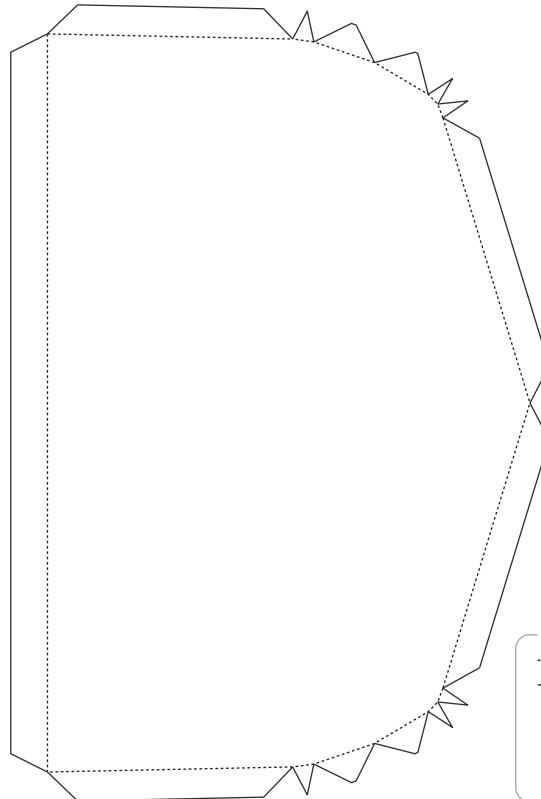
A-11



A-12

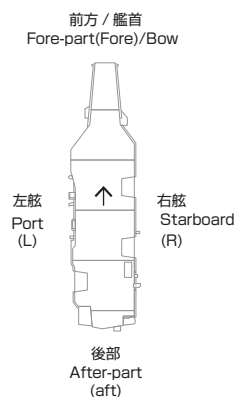


A-13



艦を上から見た場合の方向指示

Direction instructions when looking at the ship from above



How to read the symbols

	Mountain fold	Fold your paper into a mountain shape.
	Valley fold	Fold your paper into a valley shape.
	Cut out	Cut out the solid line around.
	Cut out	Cut out the part of this color.
	Bow direction	Indicates the direction of the bow.
	Where to glue	Where to glue the parts.

The explanation of the assembly method is available on the paper craft website "Paper Model Studio" (<https://papermodel.jp/cvn78-index.html>).